

Sea Isle Green Team Spring 2026 Newsletter

The Sea Isle City Green Team is actively involved in various green initiatives to promote sustainability and environmental conservation. They organize events which feature tree planting, community engagement, and educational activities. The team also participates in beach cleanups and other community beautification efforts, ensuring a greener and more sustainable Sea Isle City. The Green Team meets on the 2nd Wednesday of the month at 5:30 p.m. (March through October) City Hall (233 JFK Blvd.) 2nd Floor Conference Room



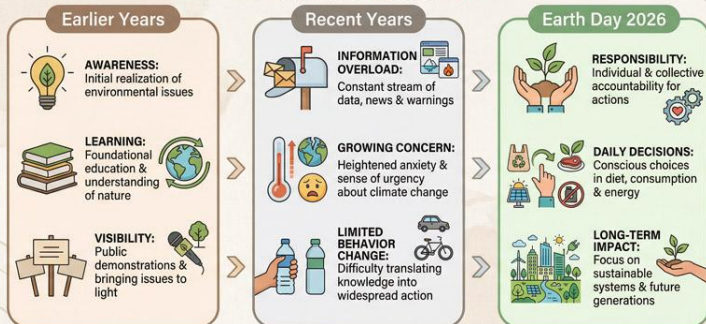
Volunteers are needed for the Sea Isle City Environmental Commission's annual Spring Beach Clean-up on Saturday, April 11, from 10AM to 12PM. During this important event, participants will clear trash and wind-blown debris

from Sea Isle's beaches, dunes and parks. Advanced registration is not needed – volunteers are asked to simply check-in on the morning of the Clean-Up at the registration table on JFK Blvd & the Promenade, where Environmental Commission members will distribute trash bags, gloves and other supplies. Volunteers will also be asked to document the items collected, and the information will be compiled to help identify possible pollution trends. For more information about the Spring Beach Clean-up, please phone 609-263-2081.

APRIL 22 EARTH DAY 2026

Why Earth Day 2026 Feels Different?

From Awareness to Responsibility



www.earthreminder.com

Arbor Day Celebration

Sea Isle's Shade Tree Commission sponsors our annual Arbor Day Celebration. This year, the event will be held on Saturday, April 25 at noon inside the SIC Community Center in the Community Room. The program will include a number of guest speakers, presentation of the Green Thumb Award, and conclude with light refreshments. We hope you are able to attend.

What to Plant in Sea Isle?

Recommended by the Shade Tree Commission

What Trees to Plant in Sea Isle?

Recommended by the Shade Tree Commission

- American Sycamore
- Blue Atlas Cedar
- Blue Point Juniper
- Eastern Red Cedar
- Cottonwood Tree
- Crepe Myrtle
- Green Spruce
- Holly
- Hydrangea
- Kwanzan Cherry
- London Plane Tree
- Magnolia
- Norway Spruce
- Okame Cherry
- Red Bud
- Vitex



Sustainable Beach Practices

- Leave nothing behind but your footprints
- Leave wildlife alone
- Decline plastic straws
- Use reusable cups, bags
- Fill in any holes you dig before you leave
- Flatten out sandcastles

Sea Isle's Green Group's Meetings

Environmental Commission

2nd Wednesday of the month at 6:30 PM
March – October in City Hall, 223 JFK Blvd,
2nd Floor Conference Room

Garden Club

1st Thursday of the month at 6:30 PM
March – June, and October – December
Community Center, 4500 Central Ave.

Shade Tree Commission

2 Wednesday of the month at 6:00 PM
March – October, City Hall, 233 JFK Blvd
2nd Floor Conference Room